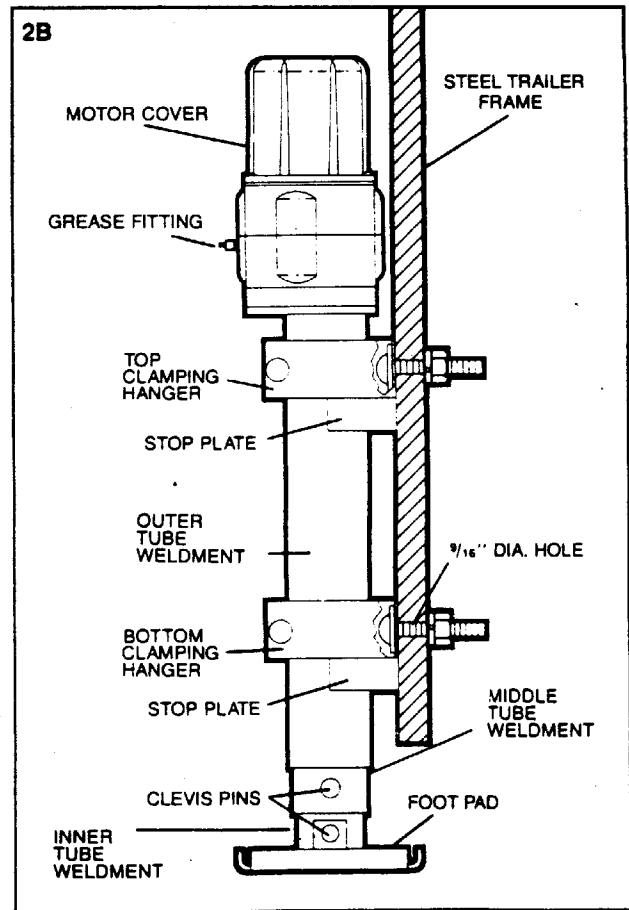
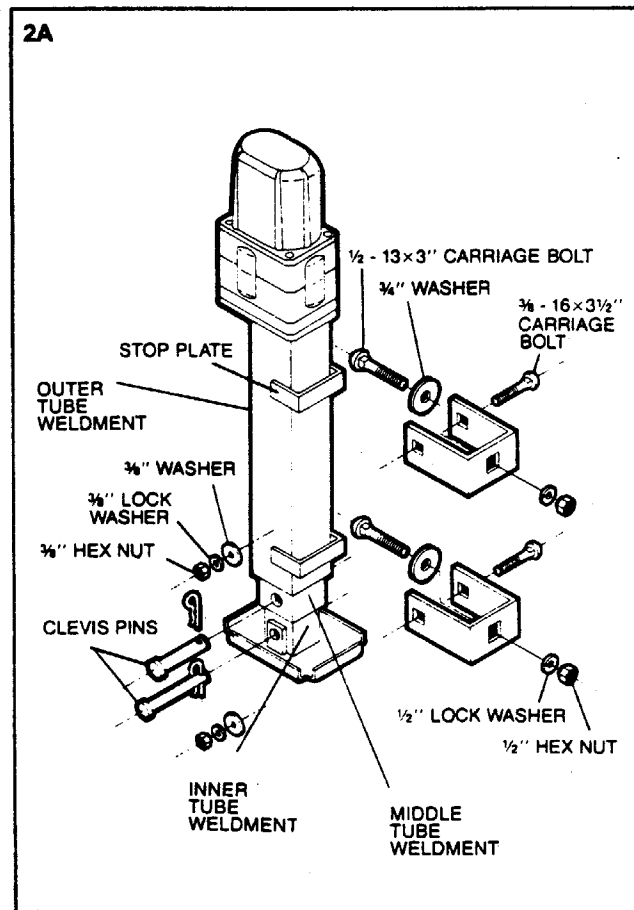
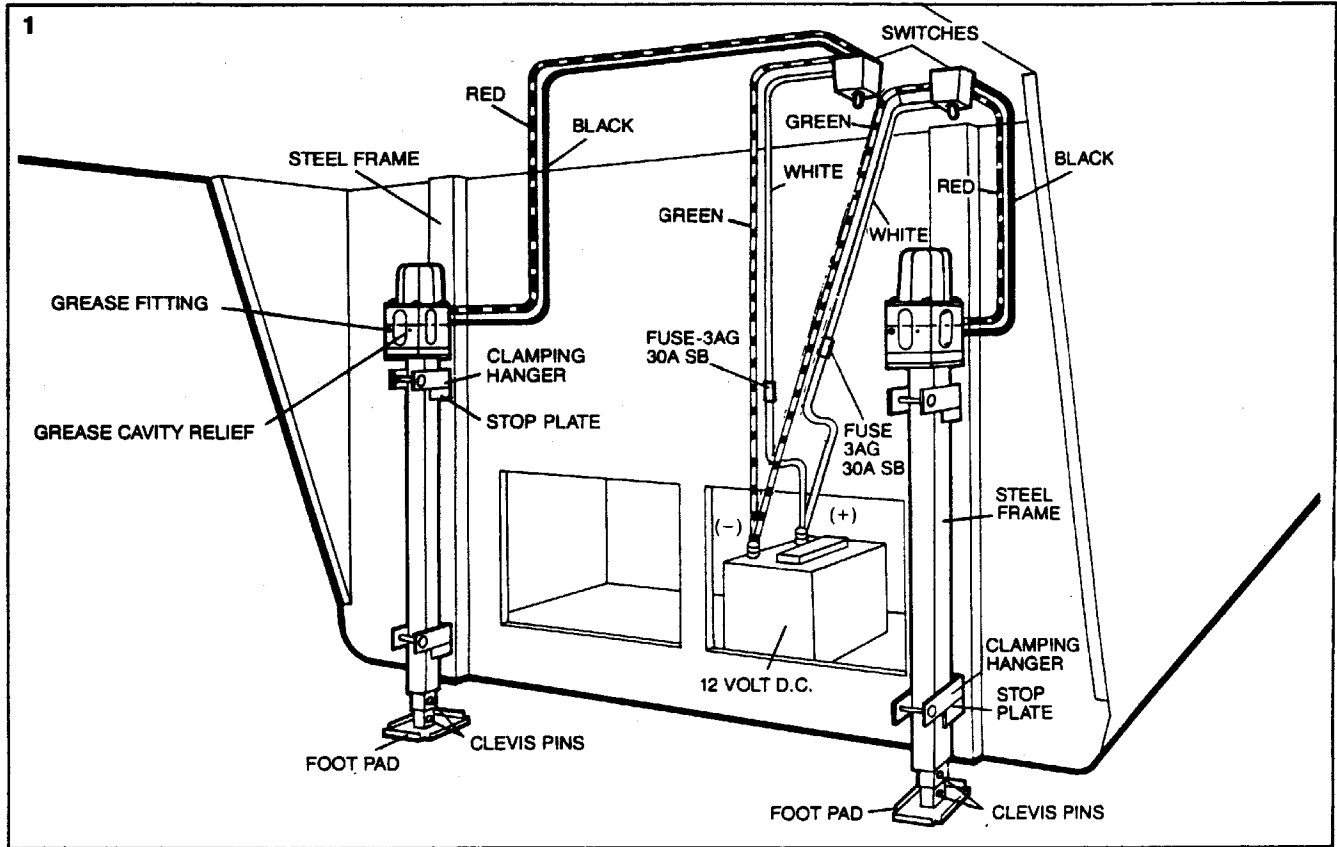




INSTALLATION/OPERATION

5th WHEEL LEVELERS

INSTALLATION/OPERATION



INSTALLATION

5th Wheel Levelers

Application

The 5th Wheel Leveler is designed and intended for use on all 5th Wheel Trailers. The entire trailer can be leveled easily and quickly when a pair of Ultra-Fab Power Levelers are added to the rear of the trailer. See your Ultra-Fab dealer for more information.

SPECIFICATIONS

Lifting Capacity—5,000 lbs. per leveler
Stroke—21"
Extended Length—74"
Retracted Length—36"
Area of Foot Pad—22 sq. in.
Max. Adjustment of Foot Pad—17"
Power Requirement—12 Volts D.C.

IMPORTANT: Read ALL of the following steps before beginning installation.

Ultra-Fab Products reserves the right to modify appearances and specifications without notice.

Tools Required for Installation

- Pencil
- Measuring Tape
- Electric Drill
- Drill Bit— $\frac{9}{16}$ " Dia.
- Pliers or Wire Crimpers
- Wrenches or Socket Set
- Wire Cutters

NOTE: The front end of the trailer should be raised up and supported at a comfortable working height. Remove existing levelers, if any. The Ultra-Fab 5th Wheel Levelers should be bolted on rather than welded on.

1. Determine exact locations for Ultra-Fab 5th Wheel Levelers.

The Top and Bottom Clamping Hangers for each Leveler must be mounted against steel members for secure mounting.

Position each Leveler so that the uppermost Clevis Pin falls just below the bottom of the trailer. This is to permit easy adjustment of the Foot Pad.

Mark the exact location for mounting each set of Hangers, making sure that the Levelers are at the same height and that they are straight vertically. Fig. 1.

NOTE: The Stop Plates **MUST** be positioned **UNDER** the Clamping Hangers. Fig. 2B.

2. Using the Hanger as a template, drill a $\frac{9}{16}$ " DIA. hole for each of the Top and Bottom Hangers.

Bolt the Clamping Hanger to the frame with a $\frac{1}{2} \times 3$ " Carriage Bolt, Washers and Nut. Repeat for other Hangers. Figs. 2A & 2B.

Next, secure each Leveler to the Clamping Hangers, using a set of $\frac{3}{8} \times 3\frac{1}{2}$ " Carriage Bolts, Washers and Nuts.

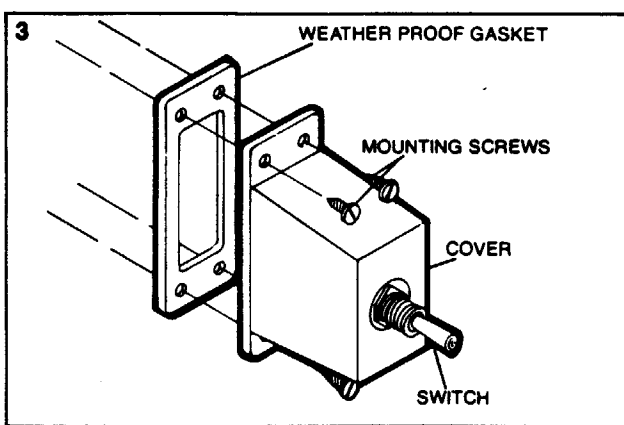
Clamp securely, making sure that Hangers are directly above and in contact with the Stop Plates. Fig. 2B.

3. Install the two Switches.

The weather-proof Switches can be mounted at any desired location. However, the most practical place might be under the trailer overhang. While inconspicuous, this location allows good view of the Levelers and hitching mechanisms.

Place the switch within the Cover, place the Gasket between the Cover and the Mounting surface, and secure with the four screws provided. Fig. 3.

NOTE: The two Switches may be installed in the truck's cab and connected to the Levelers with a 4-prong connector.



4. Wire the Ultra-Fab 5th Wheel Leveler System. Fig. 1.

CAUTION: To avoid short circuits, leave the fuse out of the Fuse Holder until wiring is completed.

WARNING: Use of wire smaller than #10 gauge for extensions will void the warranty, if more than the provided amount of wire is needed, be sure to use #10 or larger gauge wire.

NOTE: Join all wires with solder and electrical tape or Crimp-type Connectors. Do NOT use Wire Nuts as they tend to loosen and fall off, as well as providing no protection to the copper wires from corrosion.

Connect the GREEN wire to the negative terminal of the battery, or securely ground it to a clean, paint-free spot on chassis.

Connect the WHITE wire to the positive terminal of the battery, or the nearest positive terminal block.

Connect the RED wire from Switch to RED wire from Leveler.

Connect the BLACK wire from Switch to BLACK wire from Leveler.

5. Test the Ultra-Fab 5th Wheel Levelers.

Replace the fuse (3AG 30amp Slow Blow) and test the Levelers one at a time. Check to see that the Switches are wired in a logical relationship to the Levelers and to each other.

OPERATION

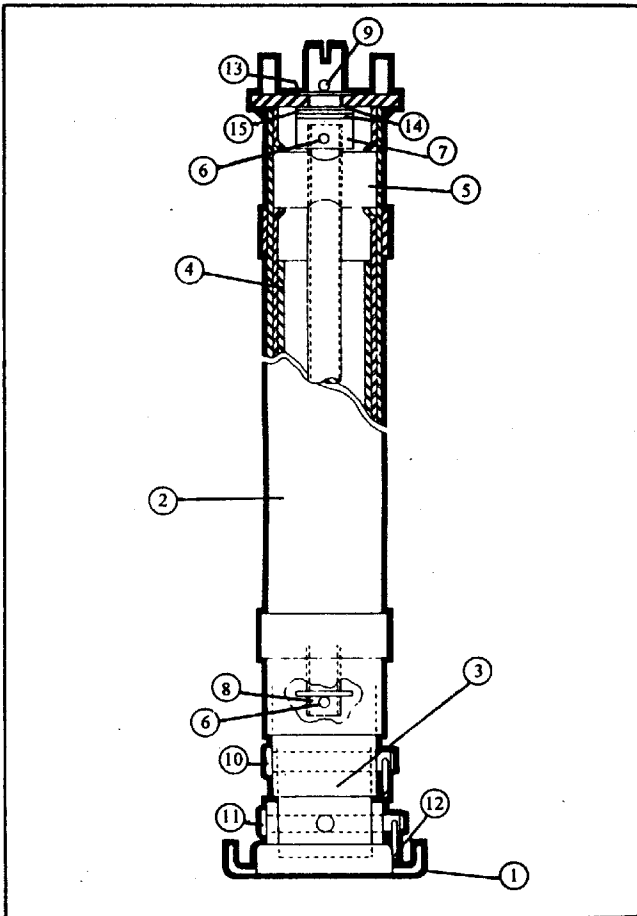
TO EXTEND

1. Choose a location as level as possible, to minimize the need for leveling and stabilizing.
2. Place blocks in front of and behind each wheel.
3. Disconnect the upper Clevis Pins, lower the Foot Pads to the ground, and replace the Pins into the nearest hole.
4. To raise the hitch from the truck, both Switches can be operated at once.
5. Because they are independently controlled, the 5th Wheel Levelers can be used to level the trailer front, as well as to hitch and unhitch.

TO RETRACT

1. Position the truck to align hitching mechanisms.
2. Operate the two Switches to lower the trailer and couple it onto the truck. Continue retracting the Levelers until they are fully retracted.
3. Remove Clevis Pins, slide Foot Pads up all the way and secure by replacing the Pins.

NOTE: All Levelers should be cycled at least once a month.



HELPFUL HINTS

1. On softer ground use larger pads under the Foot Pads.
2. Although the Ultra-Fab 5th Wheel Levelers are of extra-sturdy construction, care should be taken not to back the truck into the Levelers.
3. In case of a power failure or malfunction, the Levelers can be operated manually by removing the four (4) screws that hold the motor/gear assembly. The slotted shaft can then be turned with a large flathead screwdriver. When replacing motor, mesh the assembly into the slotted shaft, then rotate assembly to align the screws with their respective holes.

LUBRICATION

The Motor Gear Assembly should be re-greased periodically through the Grease Fitting. Fig. 2B.

WARNING: DO NOT USE pneumatic-powered lube equipment as it can damage the Leveler unit. Use hand-operated grease gun only.

Fill the Gear Cavity with heat resistant grease, (Manufacturer uses and recommends Molly Bentone #3, the same type of grease used to lube cars.) Stop when the grease just begins to flow out of Grease Cavity Relief indicator hole. Wipe off excess grease. Fig. 1.

The jack stem and particularly the point where the power head meshes with the jack stem should be liberally lubricated with heat resistant grease at the beginning of each camping season.

NO.	PART NO.	DESCRIPTION
1.	841602-002	Foot Pad Weldment
2.	841003	Outer Tube Weldment
3.	741432	Middle Tube
4.	741431	Inner Tube
5.	741430	Barrel Nut
6.	741064	Jackscrew Pin
7.	741051	Drive Collar
8.	741009-008	Jackscrew
9.	741007	Collar Pin
10.	143386	Clevis Pin
11.	143361	Clevis Pin
12.	143359	Cotter
13.	141006	Thrust Washer (.061 Thk.)
14.	141005	Thrust Washer (.093 Thk.)
15.	141004	Thrust Bearing