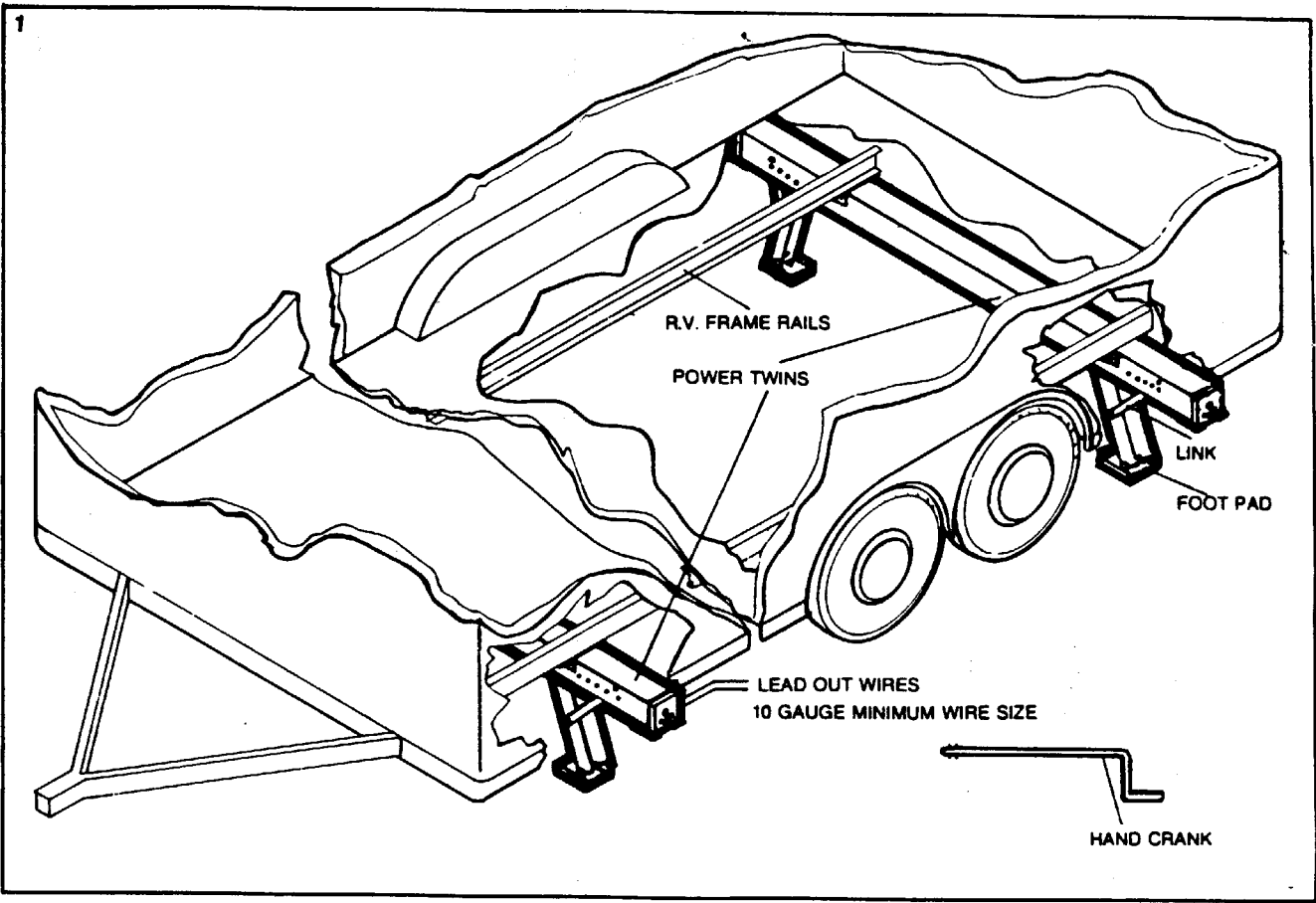




ULTRA 5000 POWER TWIN

INSTALLATION/OPERATION

INSTALLATION/OPERATION



CONTENTS:

	Qty.
Power Twin (Pre-Assembled)	1
Mounting Brackets	4
(2 mounted on ends of Power Twin to prevent shipping damage)	
Hand Crank	1
5/16" — 18 x 3/4" Cap Bolts	8
"T" Nuts	8
Flat Washers	8
Lock Washers	8

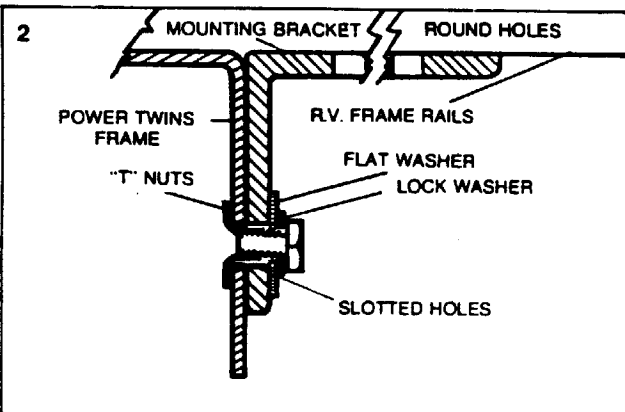
TOOLS REQUIRED FOR INSTALLATION:

- Welding Equipment (Optional)
- 1/2" Capacity Drill (Not needed if welding is used)
- 1/2" Wrench
- Electrical Tools; Wire Stripper, Soldering Tools, etc.

1. In selecting a position for each POWER TWIN LEVELER, there are important points to consider:

- A. The Power Twin is designed to attach directly to the main frame rails of the R.V. chassis. Bumpers or other locations must be reinforced (Figure 1).
- B. Be sure that holding tanks, pipes, valves, etc., will not interfere with the swing of the HAND CRANK.
- C. Tail dragging can damage any unit placed on the extreme end of a vehicle.

2. Remove the Angle Brackets from each side of the Power Twin. These are for protection of unit during shipping. Save these Brackets for installation.



3. Four Mounting Brackets with pre-punched slots and holes greatly simplify installation. (Fig. 2) The Mounting Brackets are attached first to the Power Twin, using "T" Nuts and 5/16 — 18 x 3/4" Bolts and Washers.

4. Insert the "T" Nuts from the inside of the Power Twin frame, pointing outward with the tubular part through the selected hole. Place the Mounting Bracket with the slotted holes to the "T" nuts. Install a 5/16 — 18 x 3/4" Bolt, with a Flat Washer against the slotted hole and a Lock Washer against the head of the Bolt.

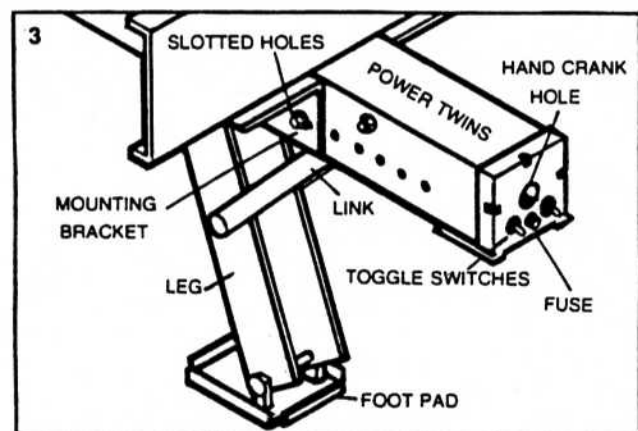
5. The Brackets may now be welded to the R.V. frame or bolted on by using suitable 3/8" Bolts.

IMPORTANT: When bolting on, use NO LESS than 3/8" dia. x 1" to 1-1/2" Long Bolts.

6. Bolting on the Mounting Brackets to the Power Twin and then welding the brackets to the frame is the best method as it makes installation strong and servicing easier.

7. Do not weld on the center of the Twin as the wires are clustered there. Use short bursts of heat when welding directly on the Power Twin frame.

8. The Switch Panel at one end of each Power Twin Unit may be removed and installed elsewhere, such as inside a storage compartment, or under the dash. When relocating the Switch Panel, order a replacement End Cap.



IMPORTANT CAUTION: When operating the Power Twin it is important that they be watched to avoid over-extending and possible damage to the leveler. This is especially important to remember if the Switch Panel has been relocated.

9. Number 10 gauge is the minimum size wire to be used to extend from the Power Twin to the power supply.

10. The unit is pre-wired inside with red and black wires. Connect the WHITE lead out wire to power (plus) post on the battery, and connect the GREEN wire to ground.

11. Use Crimp-type Connectors or solder and tape all connections. Do not use Wire Nuts as they tend to loosen and fall off, aside from providing no protection from corrosion to the copper wires.

NOTE: To prevent the Power Twin from being tampered with, simply remove the fuse from the switch panel.

Warning: Do Not Move the Vehicle while the Power Twin Leveler is on the ground.

CAUTION: The Ultra 5000 Power Twin is designed for leveling and stabilizing only. It is NOT intended for changing tires.

OPERATION

1. Block wheels securely.
2. The Ultra 5000 Power Twin is operated by means of the toggle switches located in the switch panel at one end of the unit.
3. Both switches may be operated together to bring the foot pads in contact with the ground or to retract the foot pads to the travel position.
4. It may be necessary to operate switches alternately when actually lifting and leveling to avoid blowing the protective fuse.

Manual Operation

1. Remove fuse.
2. Insert supplied hand crank through hole in end cap and engage slotted coupling at end of shaft.
3. Turn crank to retract foot pad.
4. Repeat on opposite side.

Lubrication

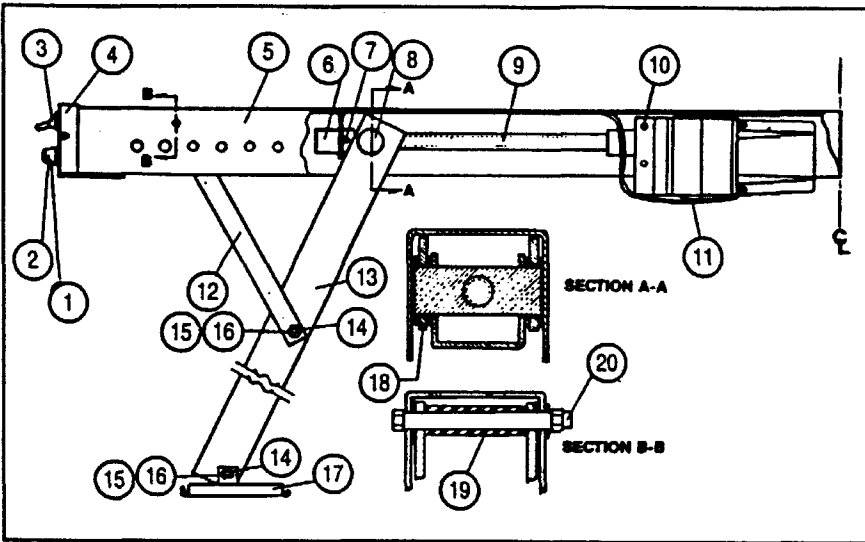
The Motor Gear Assembly should be re-greased periodically through the Grease Fitting.

WARNING: DO NOT USE pneumatic-powered lube equipment as it can damage the leveler unit. Use hand-operated grease gun only.

Fill the Gear Cavity with heat resistant grease (Manufacturer uses and recommends Molly Bentone #3, the same type of grease used to lube cars) until the grease just begins to flow out of the Grease Cavity Relief indicator hole. Wipe off excess grease.

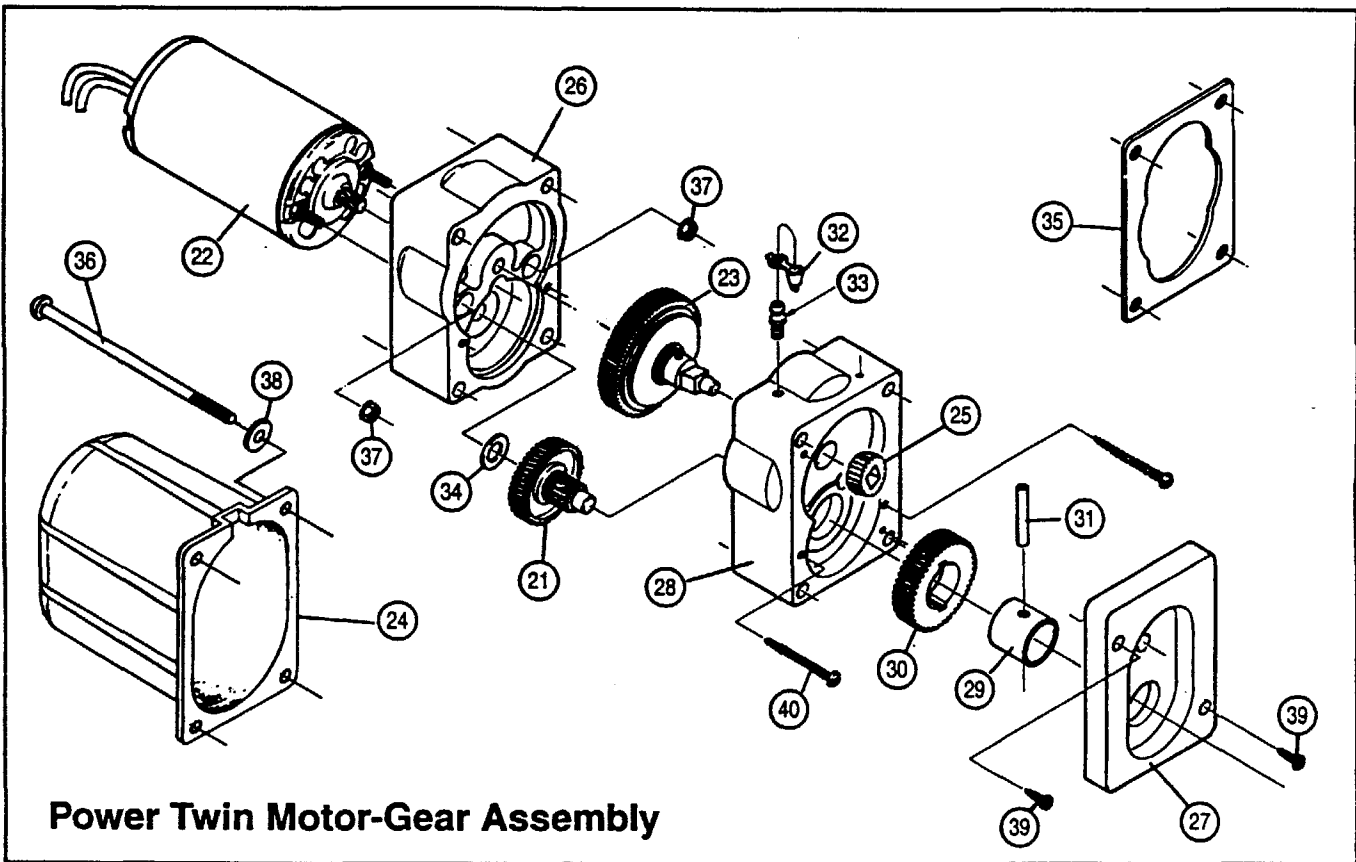


Ultra 5000 Power Twin



- | | | |
|----|---------------|-----------------------------------|
| 1 | 17-101066 | 30 Amp Slow Blow Fuse (not shown) |
| 2 | 39-101010 | Panel Fuse Holder |
| 3 | 17-101011 | D.P.D.T. Switch |
| 4 | 39-741618-001 | Right Hand End Cap |
| 5 | 39-741600 | Outer Channel |
| 6 | 39-741625 | Outer Screw Support Bushing |
| 7 | 17-741064 | Jackscrew Pin |
| 8 | 39-741606 | Jackscrew Nut |
| 9 | 39-841605 | Collar-Jackscrew Assembly |
| 10 | 39-114005 | 3/8-16 x 4 1/4 Hex Hd. Bolt |
| 11 | 39-840007-005 | Motor-Gear Sub Assembly |
| 12 | 39-741604 | Link |
| 13 | 39-841600 | Leg Assembly |
| 14 | 39-113120 | Snap-E Ring |
| 15 | 39-741002-003 | Main Pivot Sleeve |
| 16 | 39-741616 | Pivot Pin |
| 17 | 39-841602 | Foot Pad |
| 18 | 39-113121 | Spacer Washer |
| 19 | 39-741617 | Link Spacer |
| 20 | 39-114003 | 7/16-14 x 4 1/2 Hex Head Bolt |
| - | 39-741618-002 | Left Hand End Cap (not shown) |

EXPLODED VIEW/PARTS LIST



Power Twin Motor-Gear Assembly

#NO.	PART NO.	DESCRIPTION	#NO.	PART NO.	DESCRIPTION
21	840028	Motor Driven Gear Assembly	32	143231	Grease Fitting Cap
22	840016-001	12V D.C. Motor	33	143230	Grease Fitting
23	840005-003	Clutch Assembly	34	141010-008	.390" I.D. x >360" O.D. x .015" Thick Washer Flat
24	741622	Motor Housing	35	141008-0033	Gasket Cork 1/16"
25	39-741414	Gear Driven Pinion 20T.	36	113368	#10-32 x 4 1/4" Screw
26	741069	Universal Drive Gear Housing	37	113303	10-32 Keps Nut
27	741042	Gear Housing Plate	38	113273	#10 Flat Washer
28	741032	Clutch Gear Housing	39	113055-001	#6 x 1/2" Self Tapping Screw
29	741023	Jack Drive Sleeve	40	111002	#6 x 2" Self Tapping Screw
30	741413	Jack Drive Gear	-	841611	Emergency Hand Crank (not shown)
31	741021	Jack Drive Sleeve Pin			

ONE-YEAR LIMITED WARRANTY

INSTALLATION/OPERATION

This RV Leveling System is warranted to the original owner for a period of one (1) year from the date of purchase against defective workmanship and parts, provided:

1. It was installed according to instructions.
2. A proof of purchase is presented.
3. The Warranty Registration Card has been completed and mailed to Ultra-Fab Products within 15 days after purchase.
4. The damaged unit is returned to Ultra-Fab Products transportation prepaid.

Unit **MUST** have a return authorization number before factory will accept it. Please write or call Ultra-Fab Products for a return authorization number. When return authorization is given, send the defective unit to factory prepaid, along with proof of purchase date. Your unit will be repaired or replaced at Ultra-Fab Products' option, and returned to you freight prepaid.

Your RV Leveling System is not warranted against abuse or misuse such as:

1. Immersion of working parts in water.
2. Moving the vehicle without retracting the levelers.
3. Improper installation, operation or service as per Ultra-Fab Products' instructions.

This is a Limited Warranty as defined by federal law. Liability for indirect or consequential damages for any incidental expenses is excluded. Ultra-Fab Products shall be liable only to the extent and for the time expressed in this warranty and no further. This warranty is non-transferable.